

RESIDENTIAL PROJECT

TUL

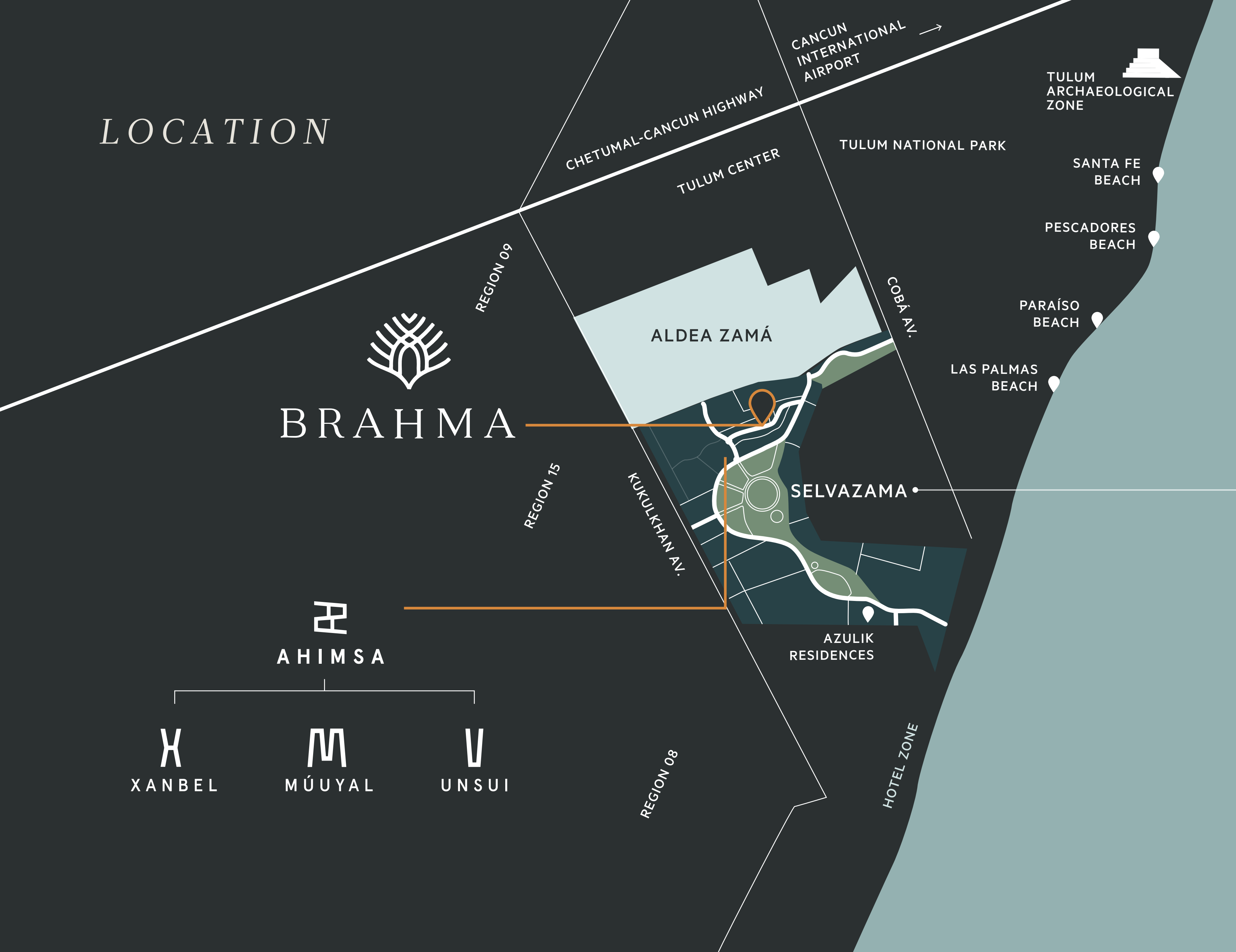


MEX

BRAHMA

TULUM, QUINTANA ROO, MEXICO

LOCATION




BRAHMA


AHIMSA

 **XANBEL**  **MÚUYAL**  **UNSUI**

- ALDEA PREMIUM
- PASEO KUKULKAN
- AHIMSA RESIDENCIAL
- BALAM HO
- FORBES SUITES
- DHARMA RESIDENCIAL
- GREEN VILLAGE
- GREEN SCHOOL
- ART PARK
- AMIRA DISTRICT
- HOTEL Y RESIDENCIAS
- IO TULUM



TUL MEX
BRAHMA

RESIDENTIAL

BRAHMA ...THE CONCEPT OF CREATION AND DIVINITY.

A new project is born. 56 Luxury equipped apartments with amazing amenities located in the most exclusive and prestigious area of Tulum, Selvazama. Selvazama is a fresh, new and modern neighborhood with the beautiful beaches of Tulum just a short stroll or bike ride away. The area is complete with everything you need in the modern world, whilst still feeling at one with the lush nature that surrounds you. Our main objective is to make your transition to life in Tulum as easy as possible. All of our developments have high speed internet, essential mains, water, electricity (solar & mains), lit paved roads and walkways, 24 hr security, basement private parking and so much more (full amenities list below).

Tulum has become one of the best places to invest, with low risk and guaranteed capital gains. But not only for its rate of growth and the intangible value of its beauty, but also because of the unique quality of life it offers.

Our ethos was to design and create a relaxed lifestyle that reflects peace, harmony and tranquility between body, mind and nature, with a healthy dose of luxury, opulence and simple elegance thrown into the mix.

We are sure you will love it as much as we do.

TULUM




BRAHMA
BY PAKSI

VIRTUAL TOUR




BRAHMA
BY PARKS

FRONT FACADE



FRONT FACADE





CENTER HALL



REAR FACADE



AMENITIES

BASEMENT



MOTO PARKING

STORAGE

PARKING LOTS

RINSE AREA

OTHERS



ELEVATORS

SOLAR PANELS
FOR COMMUNAL AREAS

ELECTRIC CAR
CHARGERS

WIFI IN COMMON AREAS

GROUND FLOOR



MOTOR LOBBY

CAFETERIA

POOL BAR & BATHROOM

BIKE PARKING

GYM & WELLNESS
WITH BATHROOMS

POOL

LOBBY LOUNGE

INDOOR & OUTDOOR YOGA

POOL LOUNGE
& POOL BEDS

SURVEILLANCE

GREEN AREAS

ROOF GARDEN



POOL

SUNSET YOGA

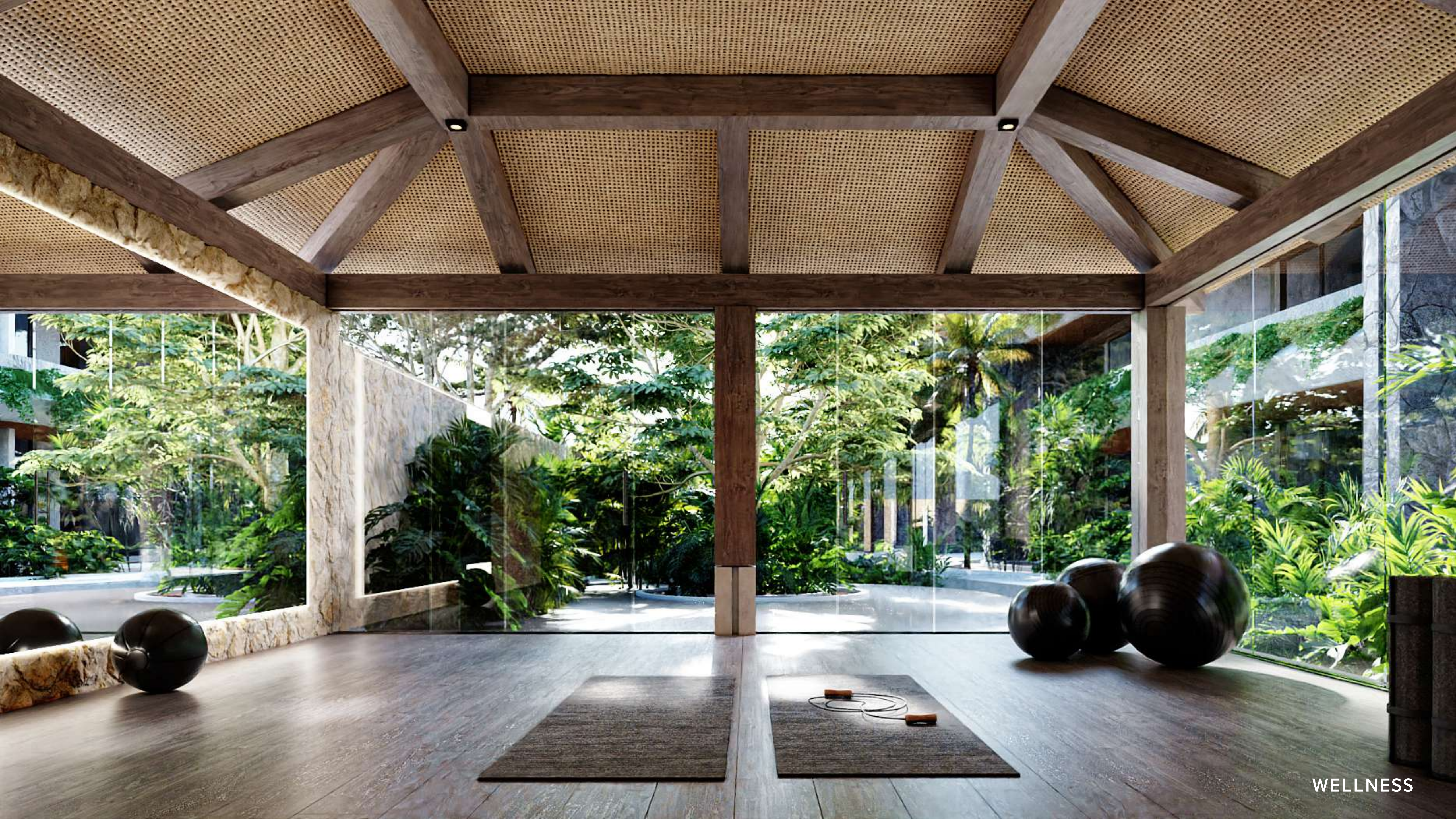
ROOF TOP BAR

LOUNGE AREA

SPA WITH MASSAGE
& SAUNA

BATHROOMS

SUNDECK







SPA



SAUNA









LIVING ROOM



DINING ROOM



MAIN BATHROOM



MAIN BEDROOM



PRIVATE ROOF



PRIVATE ROOF

BASEMENT



GROUND FLOOR

PROT. 1

PROT. 2



LEVEL 1

● PROT. 1

● PROT. 2



102

103

106

107

110

111

114

115

118

119

101

104

105

108

109

112

113

116

117

120

101-104

105-108

109-112

113-116

117-120

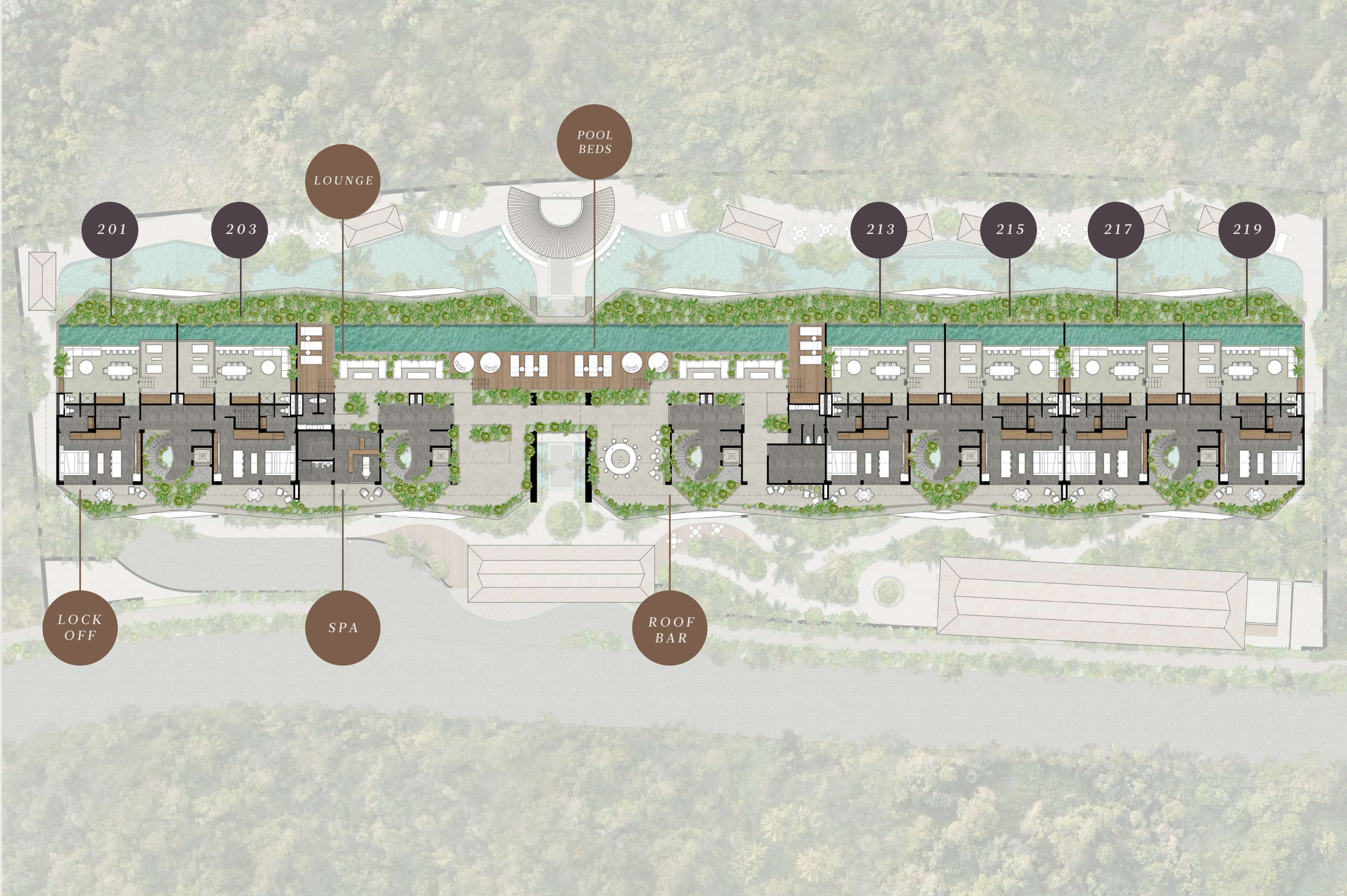
LEVEL 2

- PROT. 1
- PROT. 2
- PROT. 3
- PROT. 4



ROOF GARDEN

● PROT. 4





PROTOTYPE 01

ONE BEDROOM

001, 004, 005, 008, 012, 013, 016,
017, 020, 101, 104, 105, 108, 109, 112,
113, 116, 117, 120, 205, 208, 209, 212

LIVING SPACE

Kitchen / Dining room
Main living room
Master bedroom
Laundry room
Full bath

AMENITIES

Terrace
Outdoor dining area

Construction
64.55 m²

Terrace surface
Variable





PROTOTYPE 02

TWO BEDROOMS

002, 003, 006, 007, 010, 011, 014, 015,
018, 019, 102, 103, 106, 107, 110, 111,
114, 115, 118, 119, 206, 207, 210, 211

LIVING SPACE

Kitchen / Dining room
Main living room
Master bedroom
Second bedroom

AMENITIES

Terrace
Outdoor dining area
Laundry room
Bathroom 01
Bathroom 02

Construction
93.25 m²

Terrace surface
Variable





PROTOTYPE 03

ONE BEDROOM

202,214,218

LIVING SPACE

Kitchen / Dining room

Flex room

Master bedroom

Full bathroom including laundry area

AMENITIES

Terrace

Outdoor dining area

Construction

58.03 m²

Terrace surface

Variable





PROTOTYPE 04-A

THREE BEDROOMS

201, 203, 213, 215, 217, 219

LIVING SPACE

Kitchen / Dining room

Main room

Master bedroom

Full bath

Second bedroom

Bathroom 01

Laundry room

AMENITIES

Terrace

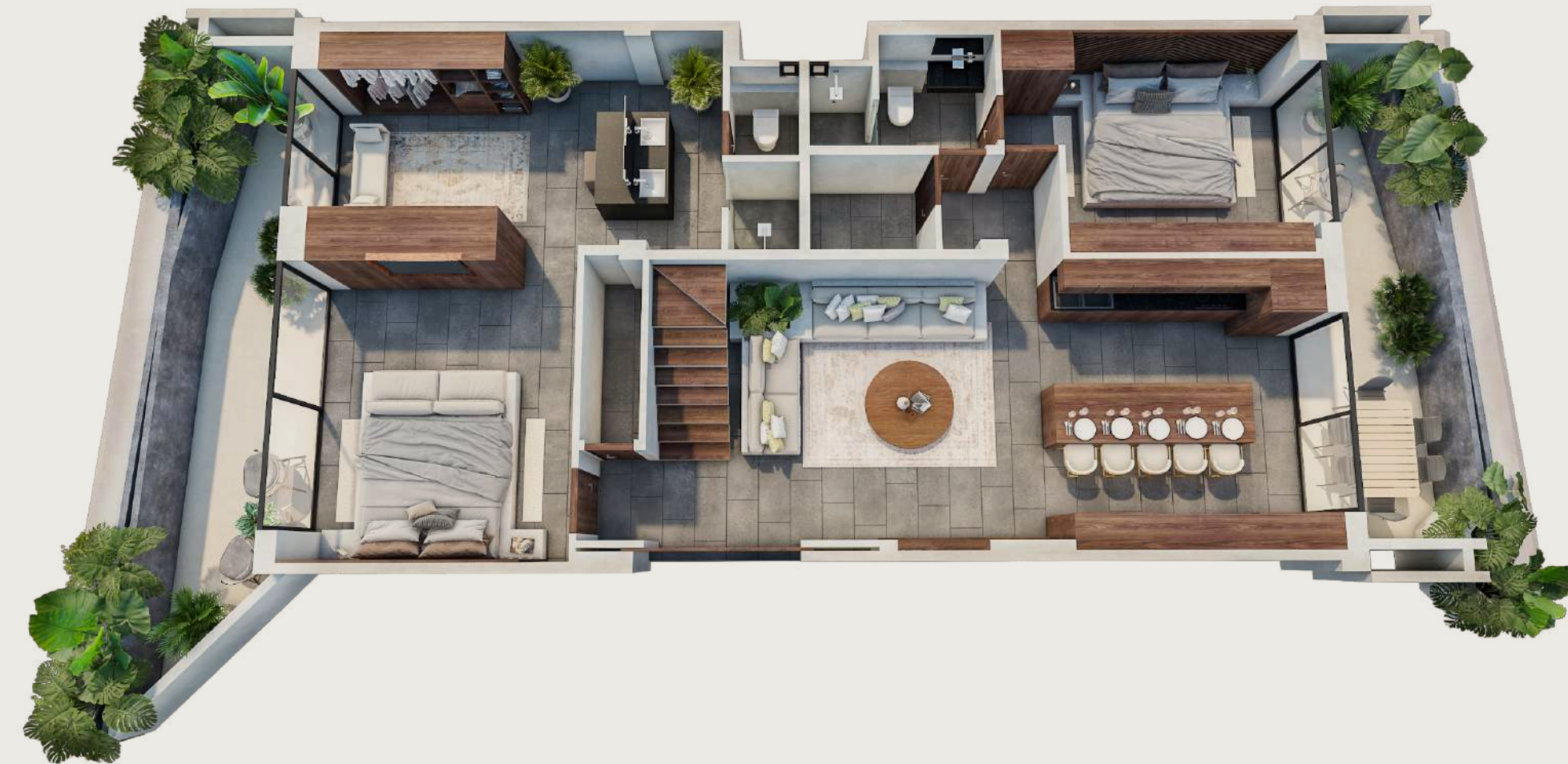
Outdoor dining area

Construction

129.48m²

Terrace surface

Variable





PROTOTYPE 04-B

FOUR BEDROOMS

201, 203, 213, 215, 217, 219

LIVING SPACE

Kitchen / Dining room

Main living room

Master bedroom

Bathroom 01

Bedroom 02

Bathroom 02

Bedroom 03

Laundry room

AMENITIES

Terrace

Outdoor dining area

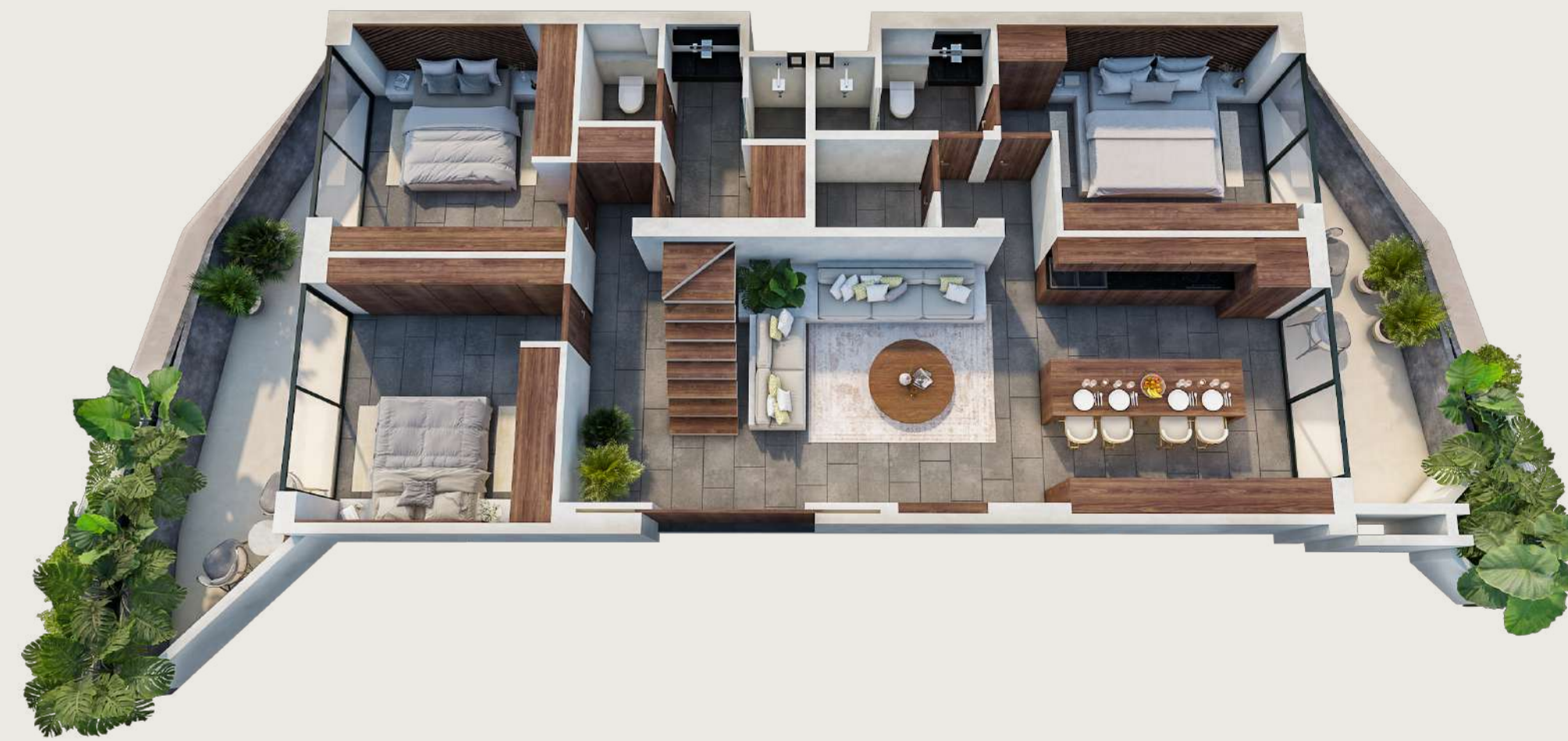
Construction

129.48m²

Terrace surface

Variable

BRAHMA





PROTOTYPE 04 LOCK OFF

201, 203, 213, 215, 217, 219

LIVING SPACE

Kitchen / Dining room

Master bedroom

Bathroom 02

Laundry area

Construction
64.36 m²

Terrace surface
Variable





PAK'TE

TULUM | IBIZA |
VALENCIA | BARCELONA

DEVELOPER

PAK'TE

The word Pak'te means together. We at Pak'te aim to unite our concepts, local resources and customs, integrating the comfortable and practical with nature, working hand in hand with the locals and with low impact proposals. Always preserving the stunning surrounding nature in everything we do. Pakte considers the local community by working and creating its own community in our projects.

ABOUT US

Pak'te is the partnership of two successful Spanish businessmen who reside in Ibiza and that after more than 25 years of experience in real estate development, came together to create different projects, using their knowledge and wisdom at the forefront of new Architectural concepts. Their projects break barriers to integrate natural elements, respecting the environment in everything they do, whilst never compromising on quality.

WORK EXPERIENCE

Pakte is led by two successful businessmen with more than 25 years of experience in construction, hotel division, and real estate development, being owners of important global companies. Their projects are located in different cities around the world such as Valencia, Ibiza, Barcelona and Tulum.

PURPOSE

Its purpose is innovation and creativity in all their projects, in which subtlety in beauty and comfort integrate perfectly with the natural elements and the style area. The union between simplicity and elegance is one of their main objectives to create a concept of life in nature.

RESIDENTIAL PROJECT

TUL



MEX

BRAHMA

TULUM, QUINTANA ROO, MEXICO